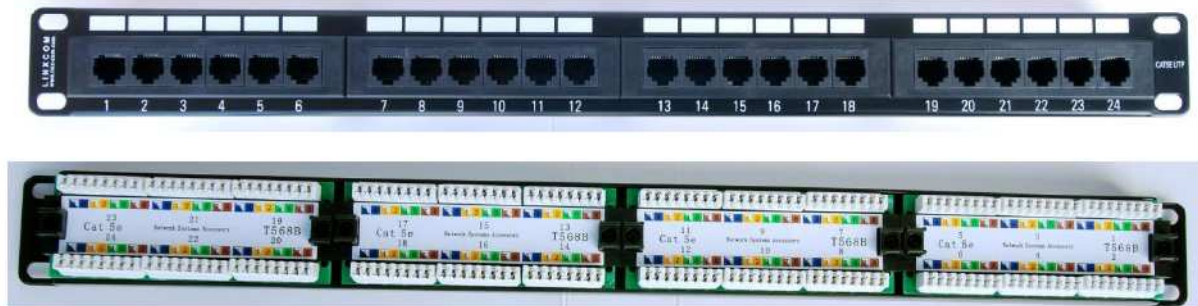


UTP CAT5E IDC Copper Patch Panel

Linxcom CAT5e patch panels comply with the EIA/TIA standard for enhanced Category 5 and are available in a choice of port density. Every patch panel is made with high quality materials and tested before it leaves our factory.



Features and benefits

- ✓ Design to mount to any standard 19" rack or cabinet
- ✓ 24 ports CAT5e patch panel
- ✓ Space saving high density 1U
- ✓ Black electrostatic Powder-coated Steel: Phosphor bronze with in plating over nickel. Meet or exceed the requirement of ANSI/TIA/EIA 568B.2
- ✓ Sturdy aluminium plate around RJ45 jacks
- ✓ Phosphor bronze with 6-50 micro inches gold plated
- ✓ Available with T568 A. T568 B wiring pattern and meeting the requirement of CAT5e standards
- ✓ Colour coded TIA/EIA 568A (international) and 568B (AT&T Standards)
- ✓ Wiring for easy installation
- ✓ Termination accepts 22, 24 and 26 AWG (0.64, 0.4) solid wires
- ✓ Metal sheet: Corrosion resistant steel
- ✓ Plastic: fire self-extinguish high impact plastic
- ✓ Fit for 110 punch down tools

Application

- ✓ POTS, T1&Tq fractional,
- ✓ ISDN basic & primary rate,
- ✓ 4/16 Mbps Token Ring (IEEE802.5),
- ✓ 10 BASE-T (IEEE802.3),
- ✓ 100 Mbps TP-PMD,
- ✓ 52/155 Mbps ATM (ATM Forum),

Gold plating:

- ✓ 3u", 6 u", 15u", 30 u", 50 u"

Silver plating:

- ✓ 1.25 um, 5um

Modularity

- ✓ 8-pin, 4-pair

Mechanical performance

- ✓ Insertion Life: 750 cycles minimum
- ✓ IDC Life: 200 times (22-26 AWG Solid wire) minimum
- ✓ Plug/Jack Contact Force: 100 grams minimum using FCC-approved plug

Electrical performance

- ✓ Insulation resistance: 1000 Mohms minimum
- ✓ Contact resistance: 7 Mohms maximum
- ✓ Dielectric intensity: AC 1000 Vrms 50Hz or 60Hz in 60s

- ✓ 100 BASE-T4 (Fast Ethernet),
- ✓ 100 VG-Any LAN (IEEE802.12),
- ✓ 100 BASE-T (Fast Ethernet),
- ✓ 1 Gbps Ethernet (IEEE802.3).

Environment Characteristics

- ✓ Storage Temperature: -40 to 70° C
- ✓ Operating Temperature: -10 to 60° C
- ✓ Relative Humidity: 95%, non condensing



Ordering Information

CONSTRUCTION	CATEGORY	STYLE	PATCH PANEL	NUMBER OF PORTS
UTP	CAT5E=5e	IDC	PP	24
STP	CAT5E=5e	IDC	PP	48
STP	CAT5E=5E	IDC	PP	24

Exp: The Part Number of 24 ports IDC style patch panel of category 5e UTP is **UTP5EIDCPP24**



Please Contact Linxcom Sales team at sales@linx-com.com for any queries. Thank you.